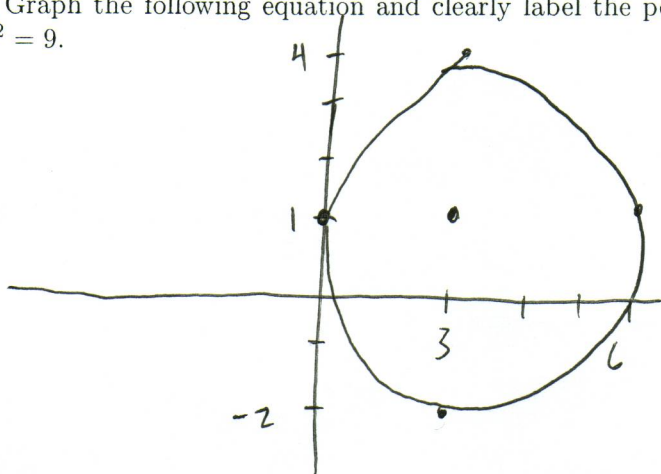


12. (7 points) Graph the following equation and clearly label the points you use to draw:
 $(x - 3)^2 + (y - 1)^2 = 9$.



13. (7 points) Solve the following inequality: $-3x - 3 < 12$. Clearly indicate the steps involved in your solution (or lose points).

$$-3x < 15$$

$$x > -5$$

14. (7 points) The rate of vibration, V , of a string under constant tension varies inversely with the length, L of the string. If a string with the same tension is 20 inches long and vibrates 500 times a second, what is the length of a string that vibrates 200 times a second? Clearly indicate the steps involved in your solution (or lose points).

$$\text{Qd } V = \frac{k}{L}$$

$$(i) 500 = \frac{k}{20} \Rightarrow k = 10000$$

$$\Rightarrow V = \frac{10000}{L}$$

$$(ii) 200 = \frac{10000}{L} \Rightarrow L = \frac{10000}{200} = 50 \text{ inches}$$