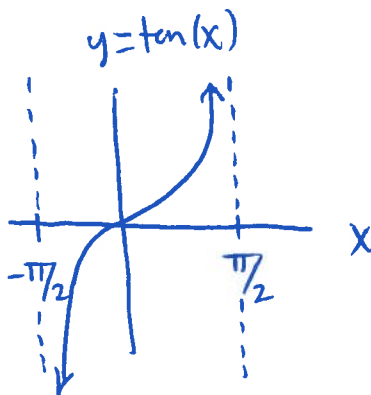


Section 4.3:

#98 | yes :



#100 |

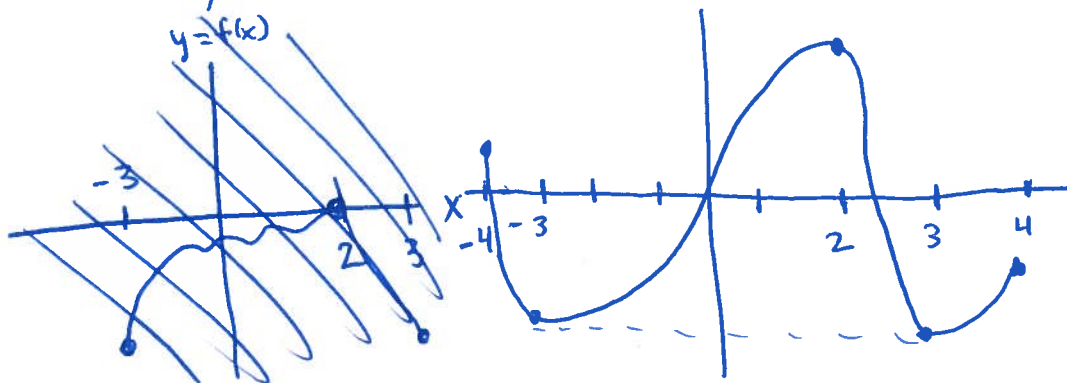
local extrema

- local min of -40 occurs at $x = -3$
- local max of 10 occurs at $x = -1$
- local min of 0 occurs at $x = 2$

absolute extrema

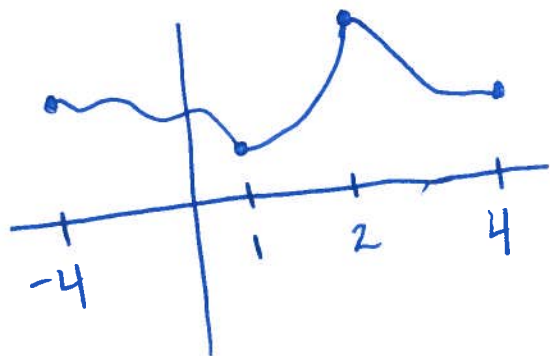
- abmax of 60 occurs at $x = -4$
- abmin of -40 occurs at $x = -3$

#104 abmax at $x = 2$, abmin at $x = \pm 3$



#105 | abmin at $x=1$, abmax at $x=2$

(2)



#107 | abmax at $x=2$ and $x=-3$, loc min at $x=1$, abmin at $x=4$

