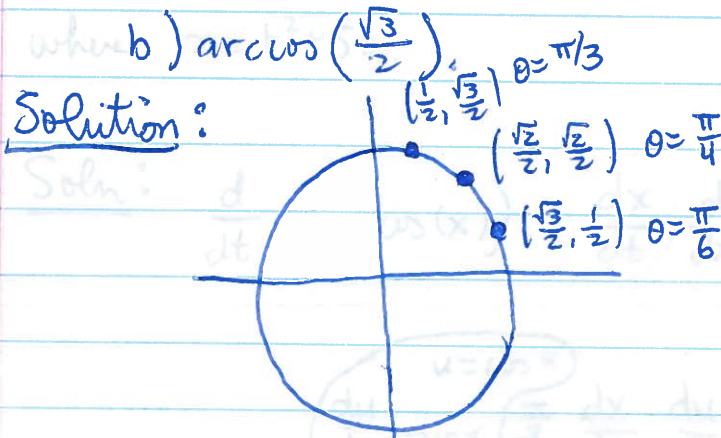


MATH 1540 Fall 2018 Quiz 4

Use unit circle to find...

a) $\arcsin\left(\frac{\sqrt{2}}{2}\right)$



a) $\arcsin\left(\frac{\sqrt{2}}{2}\right) = \text{"the angle whose sine is } \frac{\sqrt{2}}{2} \text{"}$
 $= \frac{\pi}{4}$

b) $\arccos\left(\frac{\sqrt{3}}{2}\right) = \text{"the angle whose cosine is } \frac{\sqrt{3}}{2} \text{"}$
 $= \frac{\pi}{6}$