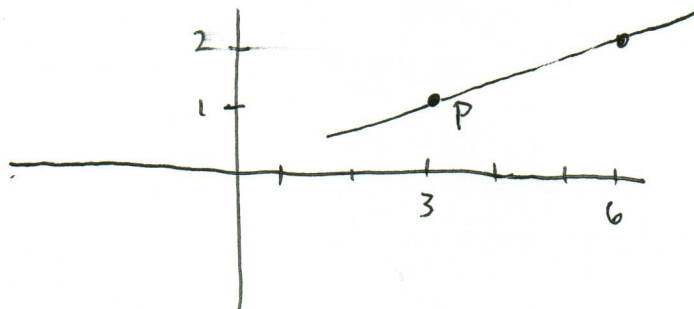


9. (7 points) Graph the line containing the point $P = (3, 1)$ and having slope $m = \frac{1}{3}$. Clearly indicate the steps involved in your solution (or lose points).



10. (7 points) Find the equation of the line with x-intercept 3 and y-intercept 6. Clearly indicate the steps involved in your solution (or lose points).

$$m = \text{Slope} = \frac{\text{rise}}{\text{run}} = \frac{6-0}{0-3} = \frac{6}{-3} = -2$$

$(3, 0)$
on graph

$(0, 6)$
on graph

$$y = -2x + 6$$

11. (7 points) Write the standard form of the equation of the circle with center $(h, k) = (1, -4)$ and radius $r = 3$.

