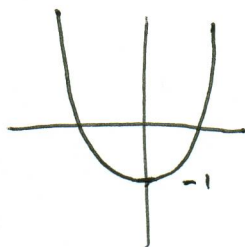
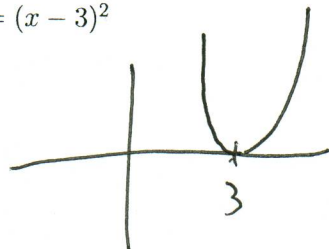


3. (24 points) Draw the following graphs using function transformations. Label your graphs or lose points!

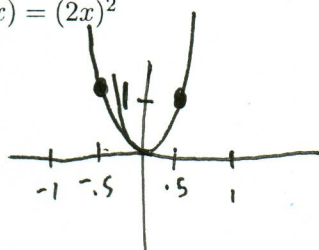
(a) $f(x) = x^2 - 1$



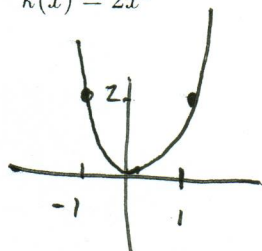
(b) $g(x) = (x - 3)^2$



(c) $h(x) = (2x)^2$



(d) $k(x) = 2x^2$



4. (6 points) Compute the distance between the following two points: (3, 7) and (-5, 9). Show all your work for partial credit points!

$$\begin{aligned}
 d((3, 7), (-5, 9)) &= \sqrt{(9-7)^2 + (-5-3)^2} \\
 &= \sqrt{2^2 + (-8)^2} \\
 &= \sqrt{4 + 64} \\
 &= \sqrt{68}
 \end{aligned}$$